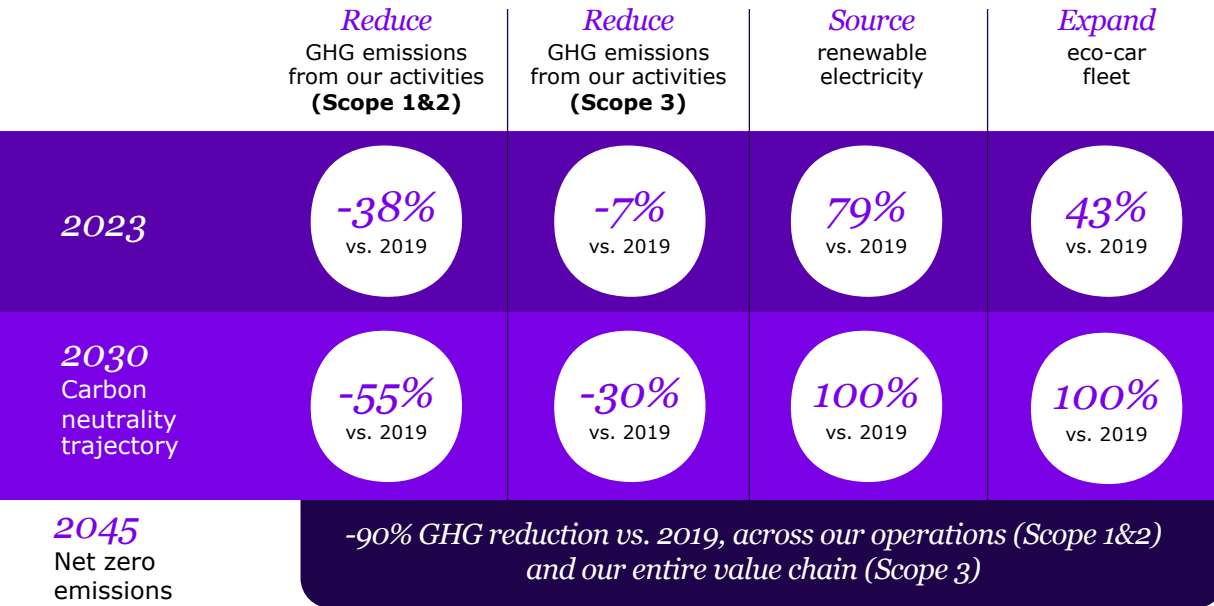


Advancing our commitments to *address climate change* and leading the SMI *Patient Care Pathways* working group



COP28
UAE



**Sustainable
Markets
Initiative**

Patient Care Pathway aims to *reduce the carbon footprint of the healthcare system* and improve health outcome.

sanofi



ESG
appendices



Sanofi ESG FY *achievements*

Affordable access

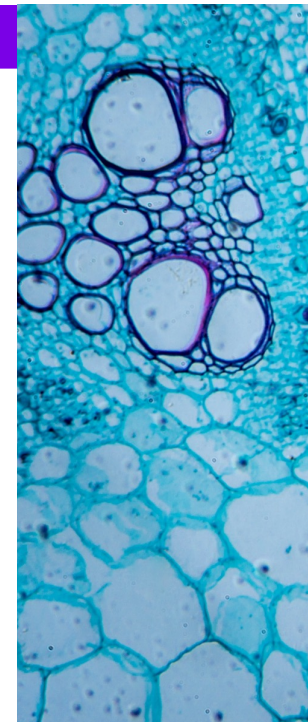
	<i>Ambition</i>	<i>Progress</i> FY 2023	FY 2022
Sanofi Global Health	Reach 1.5 million NCD patients by 2026 (cumulative since 2022) and 2 million by 2030	261,977 patients treated in 31 countries 33 active healthcare partnerships in 15 countries 3 investment though the Impact fund	185,151 patients treated in 28 countries 19 active healthcare partnerships in 11 countries 1 investment though the Impact fund
Vials donations	Donate 100,000 vials a year to treat people with rare diseases, via the Humanitarian Program launched by Sanofi Specialty Care	1,163 patients treated 124,136 vials donated	1,122 patients treated 121,025 vials donated
Global access plans	Develop a Global access plan for all new products to make them available within two years after first launch	8 Global Access plans initiated or developed covering more than 12 indications	2 Global Access Plans initiated



Sanofi ESG FY *achievements*

R&D for unmet needs

	<i>Ambition</i>	<i>Progress</i> FY 2023	FY 2022
Sleeping sickness	Develop and supply innovative treatments to support the elimination of sleeping sickness by 2030	Data updated annually, next update in Q2 2024	1.5 million patients tested 837 patients treated
Polio	Provide inactivated polio vaccines (IPV) to UNICEF for GAVI countries to support polio eradication efforts	35 million IPV doses supplied to UNICEF for GAVI countries	47 million IPV doses supplied to UNICEF for GAVI countries
Pediatric cancer treatment development	Develop innovative treatments to eliminate cancer death in children	3 assets undergoing pre-clinical assessment First pediatric patient dosed with 1 clinical asset (less than 2 years after the 1st adult patient was dosed with this compound)	1 asset pre-clinical assessment complete 1 asset in protocol preparation for clinical study 1 additional asset identified for clinical development



Sanofi ESG FY *achievements*

Planet Care

	<i>Ambition</i>	<i>Progress</i> FY 2023	FY 2022
Climate change - carbon footprint CO2 emissions	55% reduction in scope 1&2 greenhouse gas emissions (CO2 equivalent) by 2030 (cumulative vs 2019 baseline) to contribute to carbon neutrality by 2030 and net zero emissions by 2045 (all scopes)	38% GHG reduction vs 2019	29% GHG reduction vs 2019
Renewable electricity	100% of renewable electricity in all our sites by 2030	79%	62%
Eco-car fleet	100% eco-car fleet in 2030	43% eco-car fleet	34% eco-car fleet
Blister free syringe vaccines	100% blister free syringe vaccines blister packs by 2027	39% blister free syringe vaccines	33% blister free syringe vaccines
Eco-design	All new products to be eco-designed by 2025	13 LCAs completed & 2 in progress (new and marketed products)	7 LCAs completed & 1 in progress (new and marketed products) Eco design digital solution launched



Sanofi ESG FY *achievements*

In and beyond the workplace

	<i>Ambition</i>	<i>Progress</i> FY 2023	FY 2022
Global Gender balance	Ambition of 50% of women in senior leadership roles by 2025	44%	42%
	Ambition of 40% of women in executive roles by 2025	40%	37%
Engagement with communities	Engage socially and economically with all communities where we operate	12,240 volunteers 75,376 hours	6,825 volunteers 46,976 hours
From Leaders to Citizens	100% of Sanofi leaders have CSR in their development path	71% of the leaders have completed the eLearning phase 30% of the leaders have completed the full program	>50% of the leaders have completed the eLearning phase



Figures presented are YTD.

Sanofi ESG ratings

Rating agencies

S&P Global Ratings	SUSTAINALYTICS	Dow Jones Sustainability Indexes	MSCI	CDP	ISS-oeekom	FTSE4Good	access to medicine index	vigeo eiris
SCORE 87/100	21.2 Medium risk	79/100	A	Climate Change: A Water: A-	B	4.5/5	3.47/5	65/100
▲ 86/100	▲ 21.5	▲ 78/100	= A	= ▼ A/A	= B	▲ 4.3/5	= 3.47/5	▲ 64/100
One of the highest scores across all sectors globally 81 points for its solid fundamentals & strong preparedness opinion of 6 points	19 th among 419 pharmaceutical companies	Percentile of 99 within 348 scored companies in the industry	Score stable since 2021	Leading position	1 st decile of the 476 companies in the industry	With very high rating across the 3 pillars ESG	Top 10 company	1 st pharmaceutical company out of 57 Score improving since 2018

▲ vs. previous rating

Scores assigned by the rating agencies are not equivalent.