

# Global Health Unit: *making a difference* for our patients in LMICs

**Distribution of treatments at accessible prices**

**506,130** patients treated

**31** countries activated

**Health system strengthening focused on Public & NGOs partnerships**

**44** partnerships<sup>1</sup> in

**21** countries

**Scaling up inclusive businesses via Impact investment**

**4** investments via Impact fund

**€25** million committed to the fund

**€7** million already invested

## Impact

our dedicated brand delivering its first boxes

- Affordable prices
- Optimized regulatory submission
- Single-pack technology with a QR code to provide product information in local language

Data cumulative 2021 to 2024 YTD. 1. Current active ongoing partnerships.

sanofi



ESG  
appendices



# Sanofi ESG Q1 *achievements*

## Affordable access

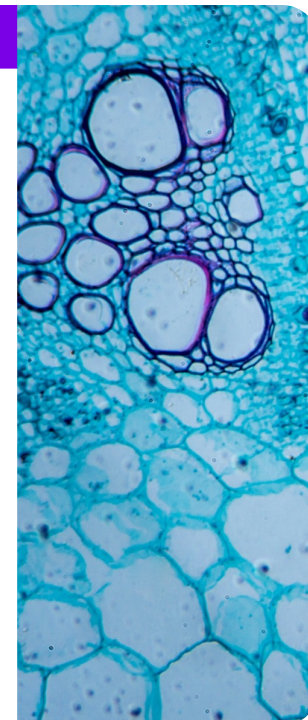
|                             | <i>Ambition</i>   | <i>Progress</i><br><b>Q1 2024</b>  | <b>Q1 2023</b>  |
|-----------------------------|---|--|---|
| <b>Sanofi Global Health</b> | Reach <b>1.5 million</b> NCD patients by 2026 (cumulative since 2022) and <b>2 million</b> by 2030                                    | <b>57,889</b> patients treated in <b>18</b> countries<br><b>44</b> active healthcare partnerships in <b>21</b> countries<br><b>4</b> investments through the Impact fund | <b>54,396</b> patients treated in <b>19</b> countries<br><b>13</b> active healthcare partnerships in <b>14</b> countries<br><b>1</b> investment through the Impact fund |
|                             |   | <b>Q1 2024</b>   | <b>Q1 2023</b>  |
| <b>Vials donations</b>      | Donate <b>100,000</b> vials a year to treat people with rare diseases, via the Humanitarian Program launched by Sanofi Specialty Care | <b>1,112</b> patients treated<br><b>17,287</b> vials donated   | <b>1,065</b> patients treated<br><b>21,542</b> vials donated  |
|                             |   | <b>Q1 2024</b>   | <b>Q4 2023</b>  |
| <b>Global access plans</b>  | Develop a Global access plan for all new products to make them available within two years after first launch                          | <b>10</b> Global Access plans initiated or developed covering more than <b>14</b> indications  | <b>8</b> Global Access plans initiated or developed covering more than <b>12</b> indications  |



# Sanofi ESG Q1 *achievements*

## R&D for unmet needs

|   | <i>Ambition</i>  | <i>Progress</i><br><b>FY 2023</b>  | <b>FY 2022</b>  |
|---|--|--|---|
| <b>Sleeping sickness</b>                      | Develop and supply innovative treatments to support the elimination of sleeping sickness by 2030           | Data updated annually, next update in Q2 2024  | <b>1.5</b> million patients tested<br><b>837</b> patients treated   |
|   |  | <b>Q1 2024</b>   | <b>Q1 2023</b>  |
| <b>Polio</b>                                  | Provide inactivated polio vaccines (IPV) to UNICEF for GAVI countries to support polio eradication efforts | <b>9.4 million</b> IPV doses supplied to UNICEF for GAVI countries                         | <b>7 million</b> IPV doses supplied to UNICEF for GAVI countries  |
|   |  | <b>Q1 2024</b>   | <b>Q4 2023</b>  |
| <b>Pediatric cancer treatment development</b> | Develop innovative treatments to eliminate cancer death in children  | <b>3</b> assets undergoing pre-clinical assessment<br><br><b>1</b> asset in clinical study | <b>3</b> assets undergoing pre-clinical assessment<br><br>First pediatric patient dosed with <b>1</b> clinical asset (less than 2 years after the 1st adult patient was dosed with this compound) |



# Sanofi ESG Q1 *achievements*

## Planet Care

|   | <i>Ambition</i>   | <i>Progress</i><br><b>Q1 2024</b>   | <b>Q4 2023</b>  |
|---|---|---|---|
| <b>Climate change - carbon footprint</b><br>CO <sub>2</sub> emissions | <b>55% reduction</b> in scope 1&2 greenhouse gas emissions (CO <sub>2</sub> equivalent) by 2030 (cumulative vs. 2019 baseline) to contribute to carbon neutrality by 2030 and net zero emissions by 2045 (all scopes) | <b>42%</b> GHG reduction vs. 2019   | <b>38%</b> GHG reduction vs. 2019   |
| <b>Renewable electricity</b>  | <b>100%</b> of renewable electricity in all our sites by 2030   | <b>84%</b>  | <b>79%</b>  |
| <b>Eco-car fleet</b>  | <b>100%</b> eco-car fleet in 2030   | <b>44%</b> eco-car fleet  | <b>43%</b> eco-car fleet  |
| <b>Blister free syringe vaccines</b>                                  | <b>100%</b> blister free syringe vaccines blister packs by 2027   | Data updated annually, next update in Q4 2024                               | <b>39%</b> blister free syringe vaccines                                    |
| <b>Eco-design</b>   | All new products to be eco-designed by 2025   | <b>13</b> LCAs completed & <b>5</b> in progress (new and marketed products) | <b>13</b> LCAs completed & <b>2</b> in progress (new and marketed products) |



Figures presented are YTD.



# Sanofi ESG Q1 *achievements*

## In and beyond the workplace

|                                    | <i>Ambition</i>  | <i>Progress</i><br><b>Q1 2024</b>   | <b>Q4 2023</b>  |
|------------------------------------|--|---|---|
| <b>Global Gender balance</b>       | Ambition of <b>50%</b> of women in senior leadership roles by 2025     | <b>45%</b>  | <b>44%</b>  |
|                                    | Ambition of <b>40%</b> of women in executive roles by 2025             | <b>41%</b>  | <b>40%</b>  |
| <b>Engagement with communities</b> | Engage socially and economically with all communities where we operate | Next update in Q2 2024  | <b>12,240</b> volunteers<br><b>75,376</b> hours   |
| <b>From Leaders to Citizens</b>    | <b>100%</b> of Sanofi leaders have CSR in their development path       | <b>70%</b> of the leaders have completed the eLearning phase<br><b>30%</b> of the leaders have completed the full program | <b>71%</b> of the leaders have completed the eLearning phase<br><b>30%</b> of the leaders have completed the full program |



Figures presented are YTD.

# Sanofi ESG ratings

## Rating agencies

| MSCI                    | SUSTAINALYTICS                          | Dow Jones Sustainability Indexes                             | WDI<br>Workforce Disclosure Initiative   | CDP   | ISS-oekom   | FTSE4Good                                      | access TO<br>MEDICINE<br>INDEX | vigeo<br>eiris   |
|-------------------------|---|--|--|---|---|--|--------------------------------|--|
| <b>SCORE</b>            |   |  |  |   |   |  |                                |  |
| <b>A</b>                | <b>21.2</b><br>Medium risk              | <b>79/100</b>  | <b>87/100</b>  | <b>Climate Change: A-<br/>Water: A-</b>                         | <b>B</b>  | <b>4.5/5</b>                                   | <b>3.47/5</b>                  | <b>65/100</b>  |
| <b>= A</b>              | <b>▲ 21.5</b>                           | <b>▲ 78/100</b>  | <b>New</b>   | <b>▼ =A/A-</b>  | <b>= B</b>  | <b>▲ 4.3/5</b>                                 | <b>= 3.47/5</b>                | <b>▲ 64/100</b>  |
| Score stable since 2021 | 21st among 447 pharmaceutical companies | Percentile of 99 within 348 scored companies in the industry | Disclosure score of 87/100 vs. a 67/100 average for the healthcare sector<br><br>2023 WDI Awards<br>Special mention for Workforce Action | Score decreased due to non climate related legacy controversies | 1 <sup>st</sup> decile of the 476 companies in the industry | With very high rating across the 3 pillars ESG | Top 10 company                 | 1 <sup>st</sup> pharmaceutical company out of 57<br>Score improving since 2018 |

vs. previous rating

Scores assigned by the rating agencies are not equivalent.