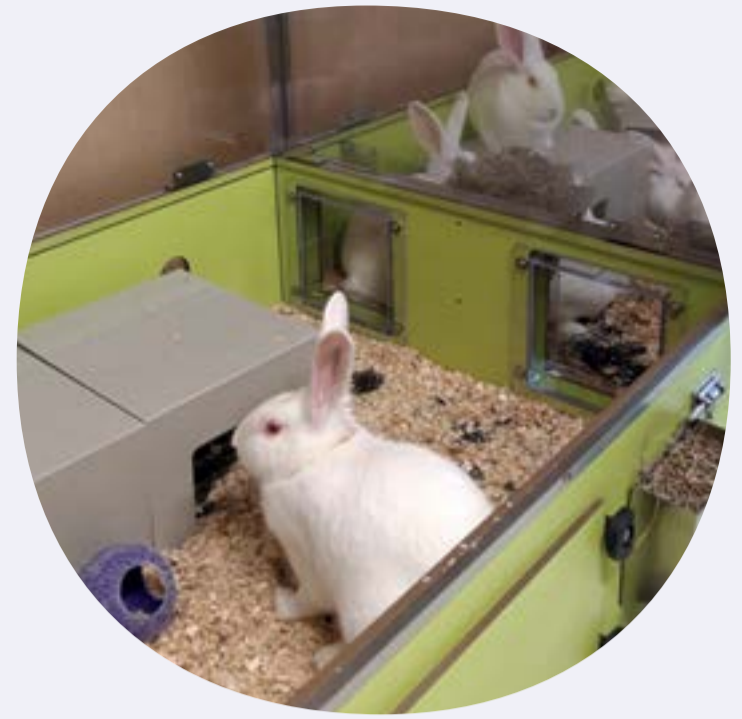


Principles on Animal Protection

Think Ethically



Sanofi is ethically and legally bound to ensure the quality, safety and efficacy of its medicines, vaccines and medical devices. The responsible use of animals is essential to fulfill these obligations. Animals remain a small but an integral part of a comprehensive research and testing strategy that also includes non-animal methods, digital, and clinical research.

In respect with its societal responsibility, Sanofi commits to meet or exceed regulations and standards for the use of animals and to develop alternative approaches. Sanofi fully adheres to the 3Rs principles: Replacement, Reduction and Refinement of animal use in all of its activities. In this context, Sanofi uses animals only when a non-animal method is unsuited for the required use (replacement), in the smallest number necessary for quality science (reduction), and implements state-of-the-art practices to promote animal welfare and prevent animal pain and distress in housing and procedure conditions (refinement). Sanofi authorizes animal use only when the regulatory and scientific merit with appropriate scientific rigor is established applying high standards of care and welfare and under strict ethical oversight.

Sanofi promotes a culture of care which embraces responsible use of animals as a primary value. Care and use programs and progresses related to animal management and 3Rs are reported openly and on a regular basis.

sanofi

www.sanofi.com

Principles on Animal Protection *Act Ethically*



It is the responsibility of every employee or any other person working under the responsibility or on behalf of Sanofi at all sites (Sanofi sites, subcontractors' sites, or partners' sites) using animals to comply with these principles.

- 1** Animals will be used only when there is a clear expectation that the results will contribute to the protection and/or the improvement of human health. Scientific merit, legal and ethical rationale, as well as scientific rigor and integrity, must be established before use of animals will be authorized.
- 2** 3Rs programs fostered by scientific and technological development will proactively support replacing, reducing, and refining animal use wherever possible.
- 3** Animal care programs and oversight committees will comply with requirements of local, national, and international laws and regulations.
- 4** Ethics and animal welfare committees will evaluate, monitor, and oversee all aspects of animal care and use. Before authorizing the use of animals, these committees will weigh the requirements for the use of animals against potential animal welfare concerns.
- 5** Experts in veterinary medicine, animal science and techniques, and animal welfare, qualified by training and experience will lead all animal programs, and foster high standards of treatment and care.
- 6** All animal care and use staff will be appropriately trained and participate in continuing education in relevant areas.
- 7** Qualified and experienced staff will help ensure humane care and appropriate use of animals on a daily basis.
- 8** Facilities for animal research, testing and production will be designed and maintained to reliably provide animals with species-specific environmental conditions and meet their behavioral and social needs.
- 9** All Sanofi sites will seek and maintain accreditation of their animal care and use program through recognized organizations such as AAALAC International.
- 10** External partners (contract research organizations, breeders and suppliers, and any other partners including academic laboratory, biotech and other institutions partnering with Sanofi on collaborative programs) will comply with animal welfare laws and commit to the spirit of these principles. Animal welfare experts on behalf of Sanofi will evaluate animal care and use program of external partners on a regular basis and approve those that comply with Sanofi standards.

At all sites, a culture of care relying on individual engagement and company commitments will enhance the robustness of welfare programs and strengthen the quality of science.

sanofi

www.sanofi.com